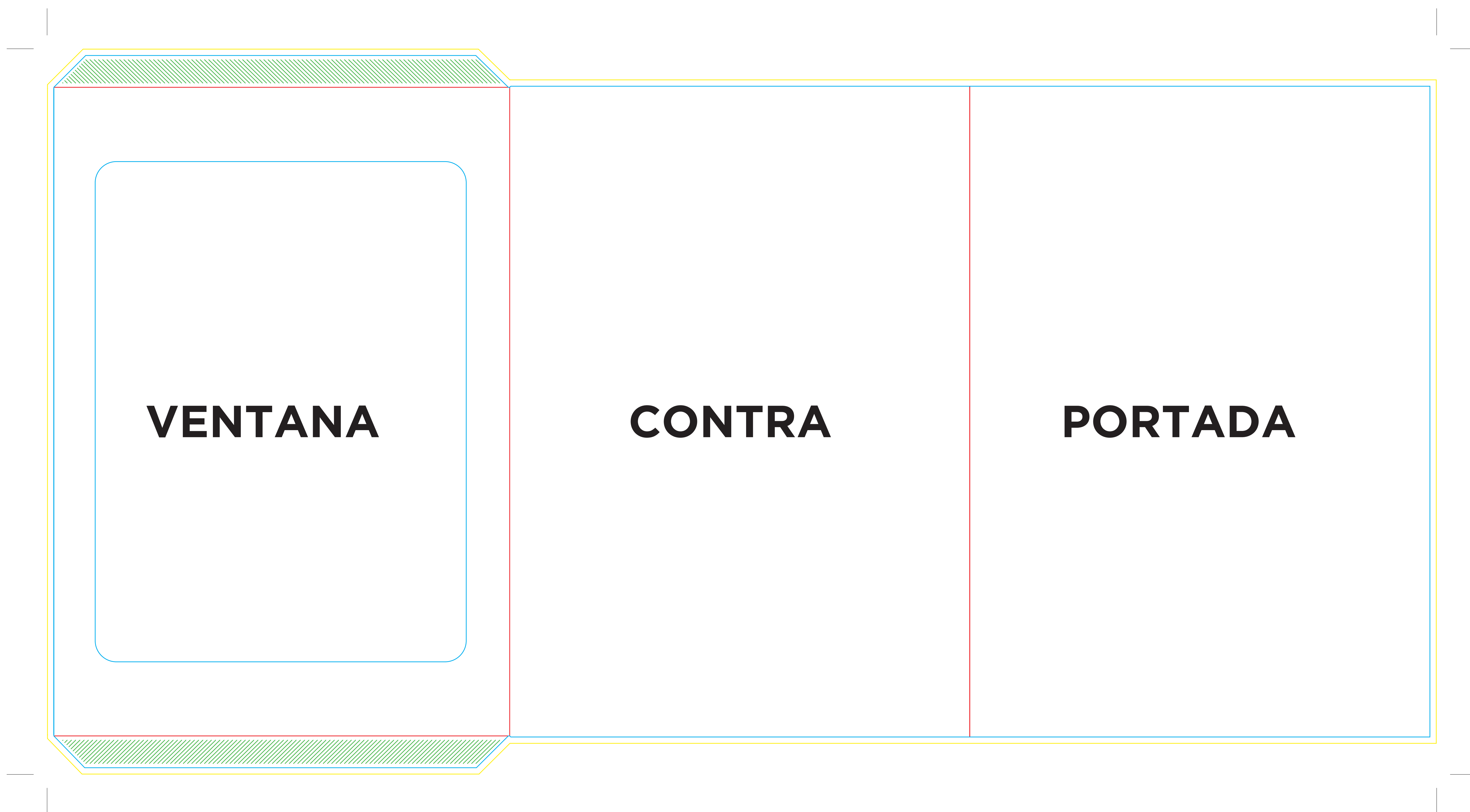


CARTAS RESTAURANTE CON BOLSILLO A4






EXTERIOR



i CARTAS RESTAURANTE CON BOLSILLO A4

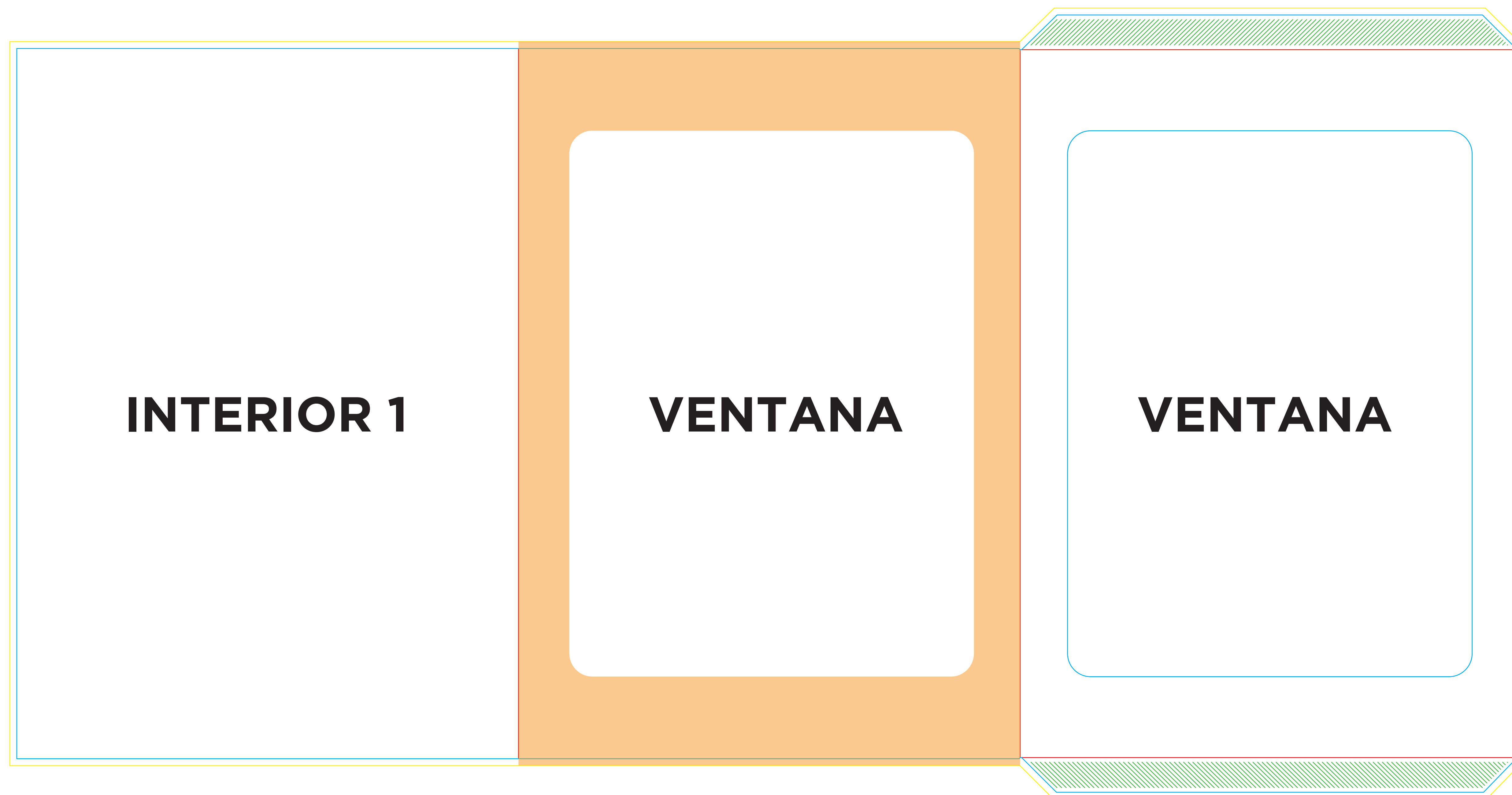
El documento debe incluir un sangrado de 3 mm e imágenes a 300 ppp.

Tamaño interior: 215X307 mm Tamaño Exterior: 217X307 mm

-  Sangrado necesario.
-  Zona máxima de diseño.
-  Hendido.
-  Semicorte.
-  Zona no visible.

CARTAS RESTAURANTE CON BOLSILLO A4






INTERIOR



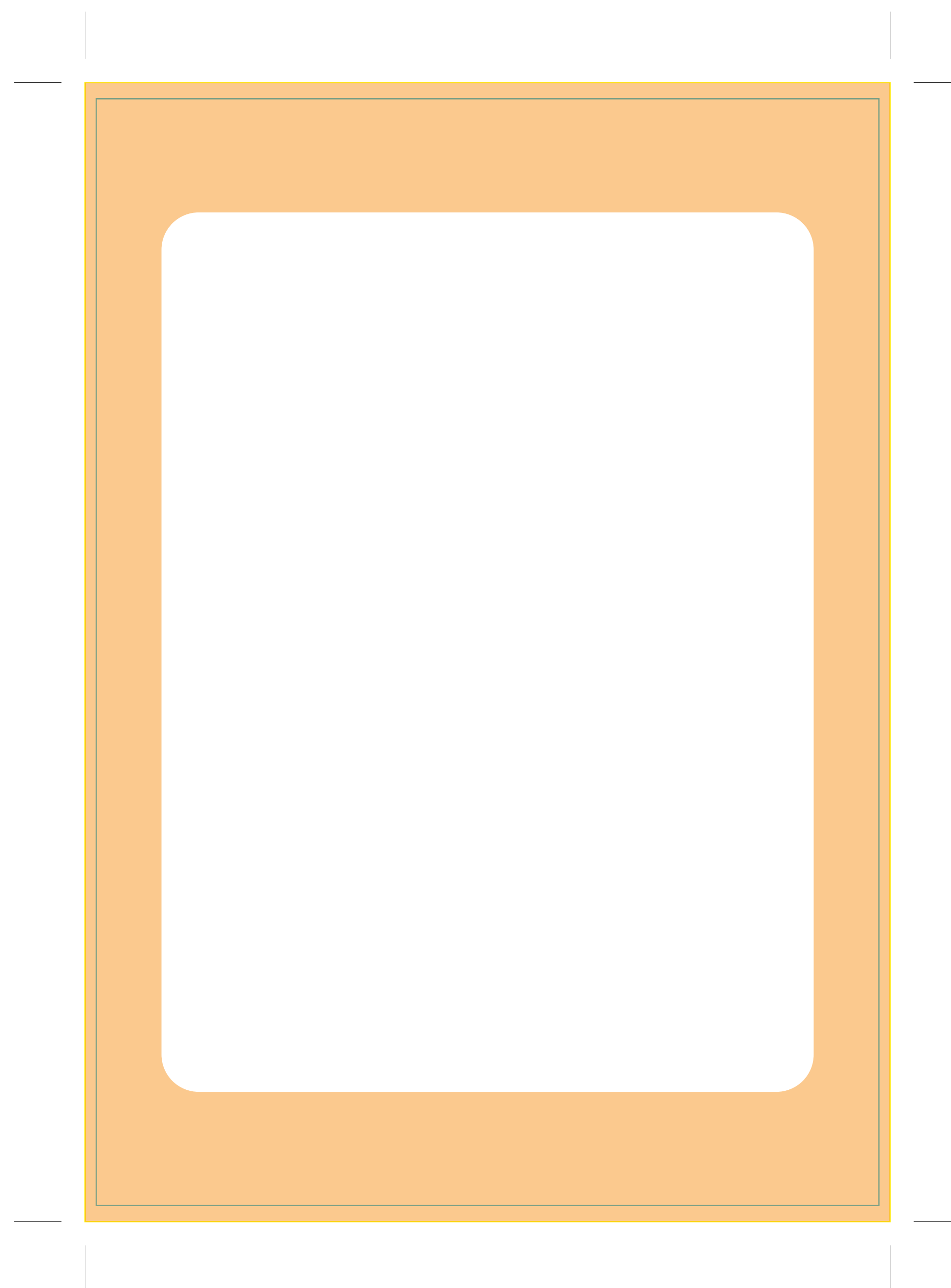
i CARTAS RESTAURANTE CON BOLSILLO A4

El documento debe incluir un sangrado de 3 mm e imágenes a 300 ppp.

Tamaño interior: 215X307 mm Tamaño Exterior: 217X307 mm

-  Sangrado necesario.
-  Zona máxima de diseño.
-  Hendido.
-  Semicorte.
-  Zona no visible.






HOJA INTERIOR



i CARTAS RESTAURANTE CON BOLSILLO A4

El documento debe incluir un sangrado de 3 mm e imágenes a 300 ppp.

Tamaño interior: 215X307 mm Tamaño Exterior: 217X307 mm

-  Sangrado necesario.
-  Zona máxima de diseño.
-  Hendido.
-  Semicorte.
-  Zona no visible.