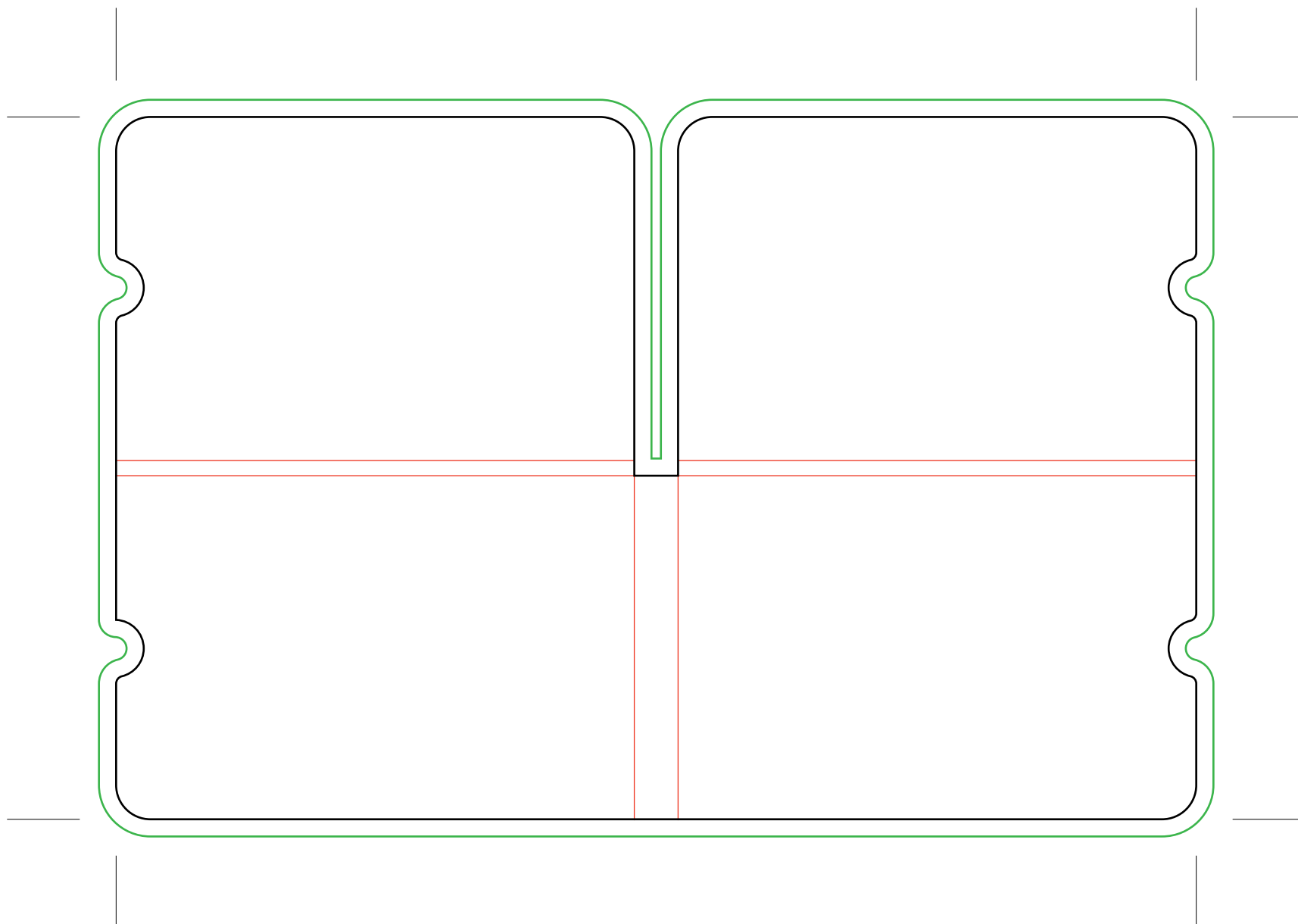


# PORTAMASCARILLAS ESTÁNDAR




## EXTERIOR



### **i** PORTAMASCARILLAS

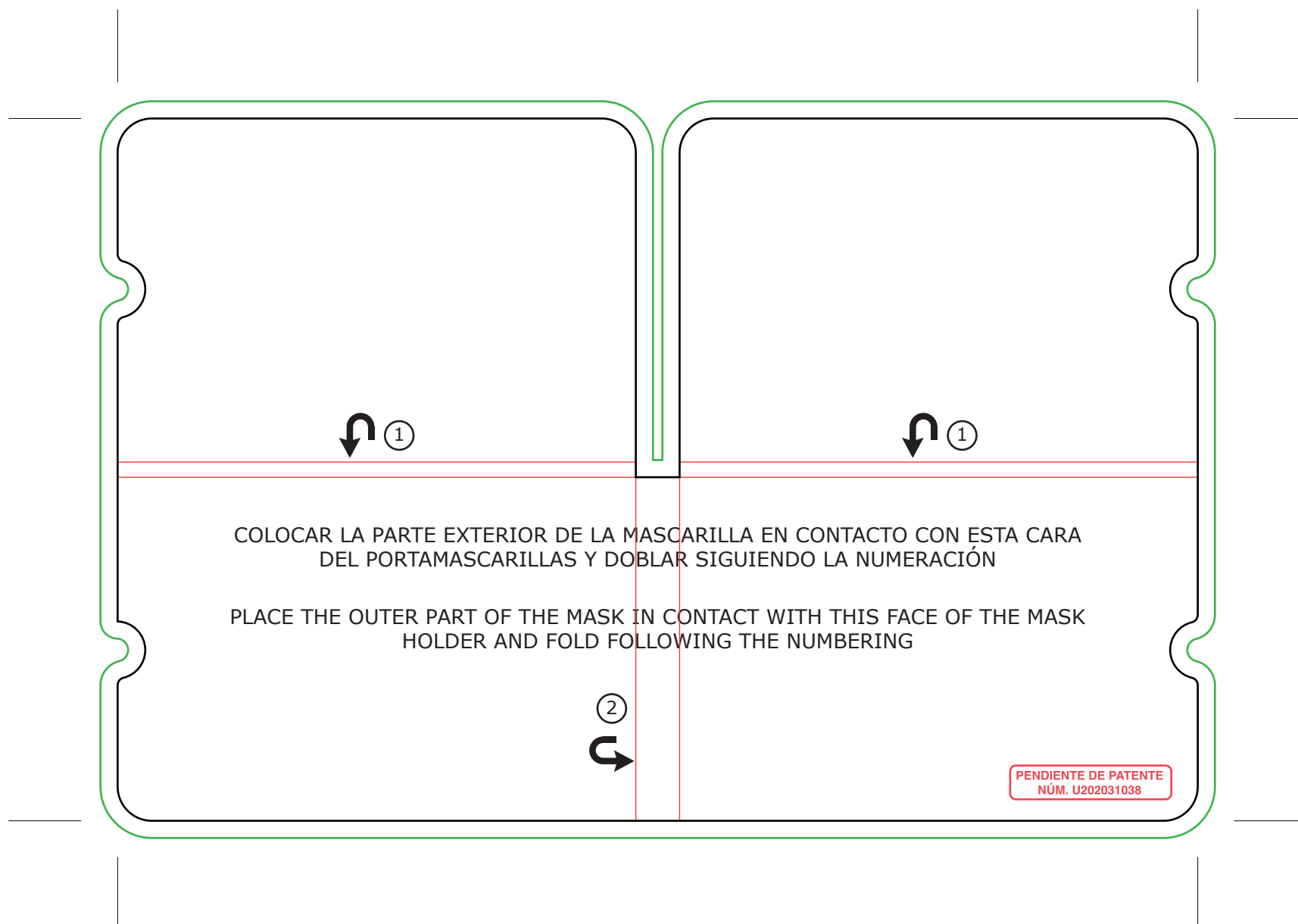
Medidas: 189x123 mm

*El documento debe incluir un sangrado de 3 mm e imágenes a 300 ppp.*

-  Sangrado necesario.
-  Zona máxima de diseño.
-  Hendidos.

# PORTAMASCARILLAS ESTÁNDAR




## INTERIOR



### **i** PORTAMASCARILLAS

Medidas: 189x123 mm

*El documento debe incluir un sangrado de 3 mm e imágenes a 300 ppp.*

-  Sangrado necesario.
-  Zona máxima de diseño.
-  Hendidos.